

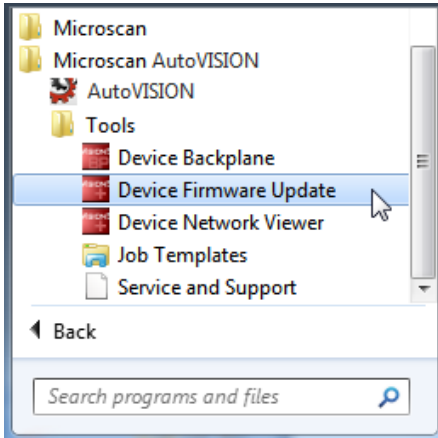


Vision HAWK and Vision MINI Firmware Update Guide

AutoVISION's simple **Device Firmware Update** feature makes it easy to download and install firmware on your camera.

To download and install firmware:

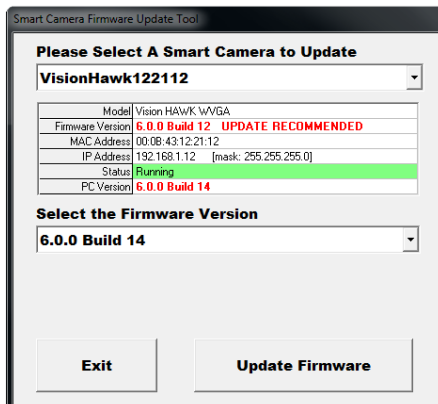
1. Navigate to **Windows Start Menu > Programs > Microscan AutoVISION > Device Firmware Update**.



2. After you click Device Firmware Update, the **Smart Camera Firmware Update Tool** will appear. Select your camera from the **Please Select a Smart Camera to Update** dropdown menu.

Note: Only cameras on the same network as your PC will be visible in this menu.

Once you have selected your camera, its identifying details, such as **Model**, **Firmware Version**, **MAC Address**, **IP Address**, **Status**, and **PC Version** will be displayed.

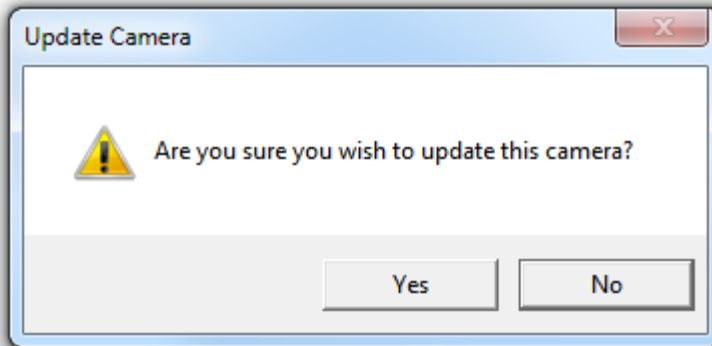


-
3. Select the desired version of firmware from the **Select the Firmware Version** dropdown menu. This menu will list all the firmware versions on your PC.

Note: The firmware versions shown in this document are representative examples and may not necessarily reflect what you see on the dropdown menu.

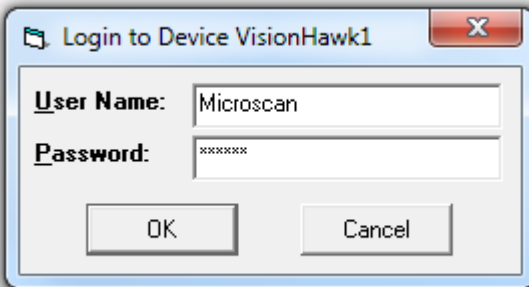
4. Click the **Update Firmware** button.

A dialog will appear asking **Are you sure you wish to update this camera?** Click **Yes**.

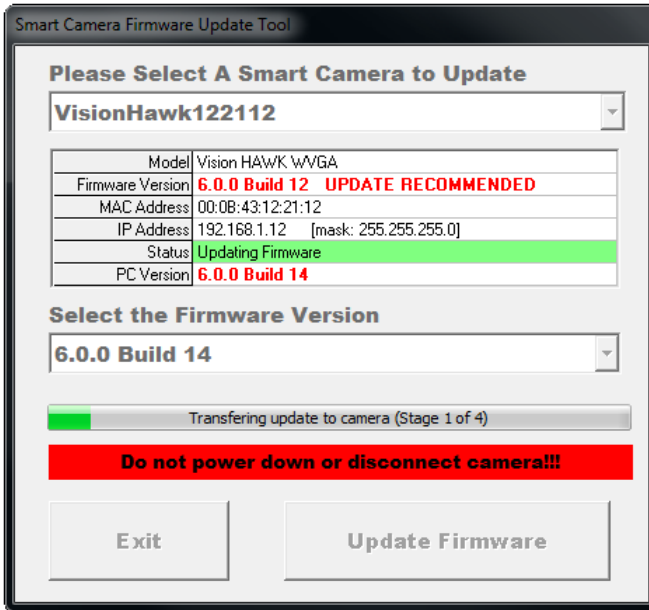


If a username and password have been defined for the camera, a second dialog will then appear prompting you for your username and password.

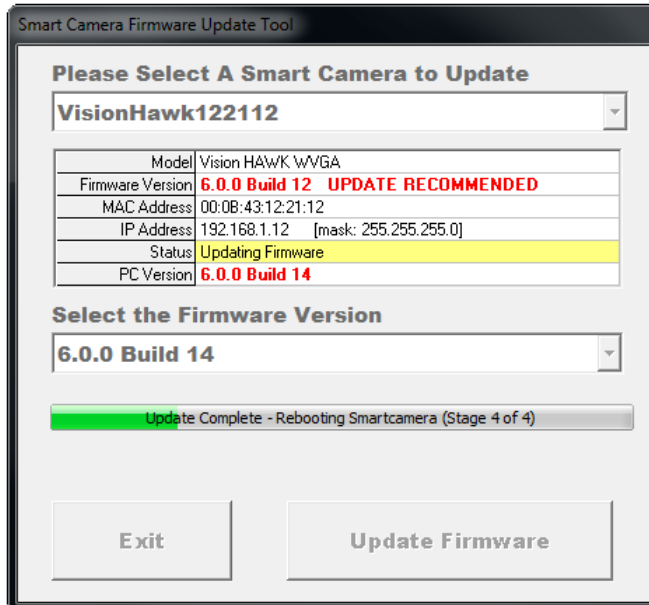
Important: The username and password are both case-sensitive. Click **OK** after you have entered your username and password to begin the download and install process.



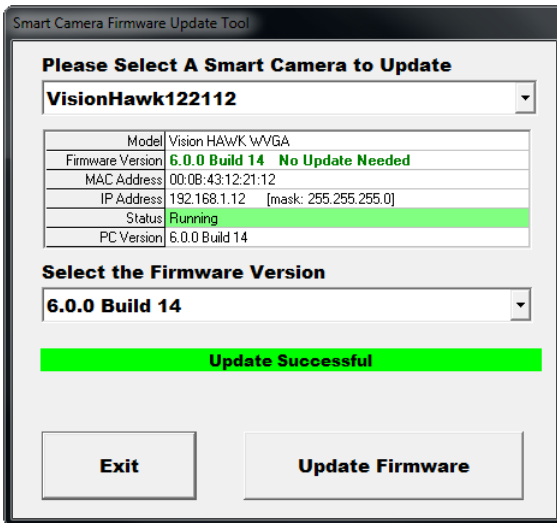
The firmware update process may take more than a minute for the Vision MINI and several minutes for the Vision HAWK.



Once the firmware is downloaded and installed, the camera will reboot.



5. When the entire firmware update process is complete, click the **Exit** button to close the utility.



Firmware Compatibility

Note that the camera's firmware version must match the version of Visionscape being used to manipulate a job on the PC. The following dialog will appear if the firmware and software versions do not match.

