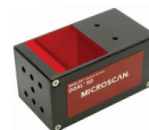


# NERLITE SMART SERIES DOAL ILLUMINATORS

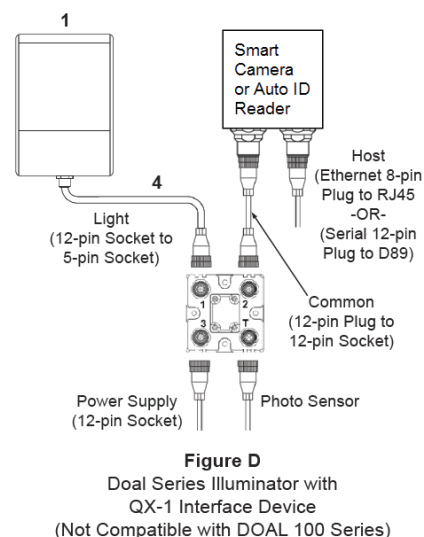
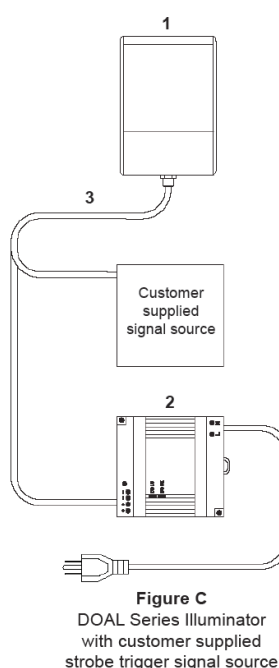
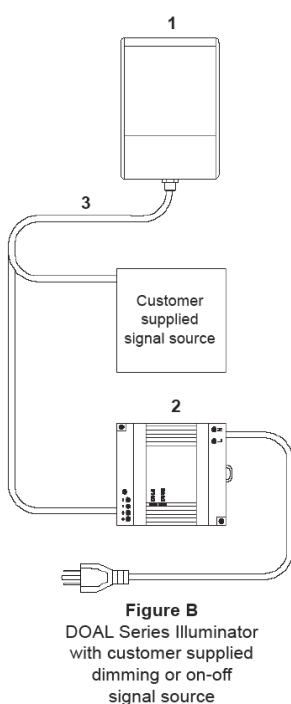
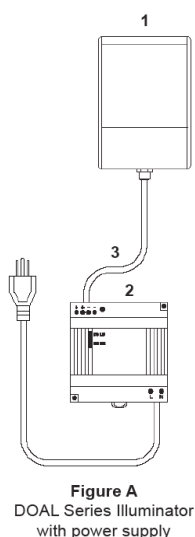
## CONFIGURATION GUIDE



			Continuous Mode	Continuous Mode With Dimming Or On-Off Control	High Output Strobe Mode
PART NUMBER	DESCRIPTION	Current Draw @ 24VDC (typ.)	No Controller Required (Can Be Connected Directly To 24VDC)	No Controller Required (Can Be Connected Directly To 24VDC)	No Controller Required (Can Be Connected Directly To 24VDC)
NER-011660400G	SMART SERIES DOAL-25, RED	.40A	Figure A or D	Figure B	Figure C
NER-011660410G	SMART SERIES DOAL-25, WHITE	.20A	Figure A or D	Figure B	Figure C
NER-011660420G	SMART SERIES DOAL-25, BLUE	.20A	Figure A or D	Figure B	Figure C
NER-011660500G	SMART SERIES DOAL-50, RED	1.3A	Figure A or D	Figure B	Figure C
NER-011660510G	SMART SERIES DOAL-50, WHITE	1.0A	Figure A or D	Figure B	Figure C
NER-011660520G	SMART SERIES DOAL-50, BLUE	1.0A	Figure A or D	Figure B	Figure C
NER-011660600G	SMART SERIES DOAL-75, RED	2.4A	Figure A or D	Figure B	Figure C
NER-011660610G	SMART SERIES DOAL-75, WHITE	1.5A	Figure A or D	Figure B	Figure C
NER-011660620G	SMART SERIES DOAL-75, BLUE	1.5A	Figure A or D	Figure B	Figure C
NER-011660700G	SMART SERIES DOAL-100, RED	3.6A	Figure A	Figure B	Figure C
NER-011660710G	SMART SERIES DOAL-100, WHITE	1.6A	Figure A	Figure B	Figure C
NER-011660720G	SMART SERIES DOAL-100, BLUE	1.6A	Figure A	Figure B	Figure C

### Hardware Required

Item	Description	Part Number
1	Smart Series DOAL Lights	NER-011660XXXG
2	Power Supply DSP60 24VDC 2.5A DIN Mount	NER-011504100
2	Power Supply DSP100 24VDC 4.2A DIN Mount	97-000006-01
3	Cable 5 Pin M12 Female To Flying Leads, 3M	61-000186-01
3	Cable 5 Pin M12 Female To Flying Leads, 5M	61-000187-01
4	Cable, Power Smart Series to QX-1	61-000204-01

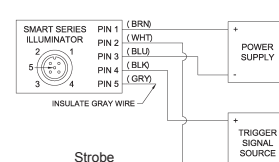
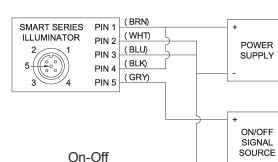
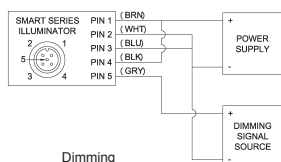
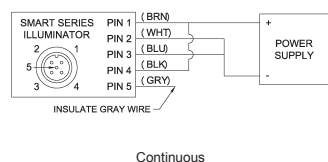


## Accessories

Description	Part Number	Application
AC Power Cord US	NER-030028300	Power Cord For Power Supply
AC Power Cord EU	NER-030028400	Power Cord For Power Supply
AC Power Cord UK	NER-030028500	Power Cord For Power Supply

## Connections

Input Connector (M12 Male, 5 Circuit, A-Code)	Pin 1	Pin 2	Pin 3	Pin 4	Pin 5	Backshell
<b>Continuous Mode (Figures A &amp; D):</b>	+20.2-28.8VDC	DC GND	DC GND	+20.2-28.8VDC	No Connection	Shield
<b>Continuous Mode With Dimming (Figure B):</b>	+20.2-28.8VDC	DC GND	DC GND & DIM (-)	+20.2-28.8VDC	Dim (+)	Shield
<b>Continuous Mode With On-Off Control (Figure B):</b>	+20.2-28.8VDC	DC GND	DC GND & DIM (-)	+20.2-28.8VDC	Dim (+)	Shield
<b>High Output Strobe Mode (Figure C):</b>	+20.2-28.8VDC	TRIG (-)	DC GND	TRIG (+)	No Connection	Shield



## Control Signals

### DIM (Continuous Mode With PWM Dimming):

0VDC (LEDs off) to 3.1-3.5VDC (LEDs on) pulse width modulated (PWM) signal, <1mA, Modulation Frequency 2KHz +/- 100Hz

*Note: When using Continuous Mode With Dimming, the LED duty cycle will equal the duty cycle of the dimming signal.*

### DIM (Continuous Mode With On-Off Control):

0VDC (LEDs off), 3.1-3.5VDC (LEDs on), (<1mA)

### TRIG (High Output Strobe Mode):

optoisolated, 0VDC (LEDs off) to 3.1-28.8VDC (LEDs on), 10mA max, 20  $\mu$ s min Trigger pulse width. Note: High Output Strobe internally limits LED frequency and pulse width to a maximum of 90Hz and 1mS respectively. Light output pulse will follow Trigger pulse width from 20  $\mu$ s to 1ms.

*Note: When using Continuous Mode With Dimming, the LED duty cycle will equal the duty cycle of the dimming signal.*

## Cable Specifications

Wire colors for flying lead cables:

Pin 1 = Brown

Pin 2 = White

Pin 3 = Blue

Pin 4 = Black

Pin 5 = Gray

Connector Nut = Shield

Note: Non-Omron Microscan cables may use different wire colors. It is the customer's responsibility to make sure the light is connected correctly per the pin numbers in the table above.